

SHELL ROCK – WINNEBAGO RIVER 1W1P DEFINITIONS

RESOURCE

A natural, economic, educational, biotic, aesthetic or similar asset. Resources are generally considered something that can be 'managed' and are generally broad, such as surface water, groundwater, or education and outreach.

RESOURCE FEATURE

A physical, biological, chemical, or geological subset or component of a resource. Resource concerns are typically a refinement of a resource. For example, the resource surface water can be refined into several resource concerns, including streams, lakes, rivers, and wetlands.

RESOURCE CONCERN

A factor, stressor or difficulty resulting in an adverse consequence for a resource concern. A resource concern can have one or many issues. For instance, elevated levels of total phosphorus could be a priority issue affecting a resource concern (i.e. lakes).

PRIORITY ISSUE

The agreed upon issues that are identified as the focus of the Shell Rock – Winnebago River 1W1P through a prioritization process.

EMERGING ISSUE

An issue that lacks the detailed information that is necessary to assess the current or imminent impact the resources in the Shell Rock – Winnebago River watershed.

PRIORITIZE

Determining the relative importance and precedence of the resources and issues in the Shell Rock – Winnebago River 1W1P.

DESIRED FUTURE CONDITION

The long-term outcome or goal; the attributes (water quality, water availability, habitat quality), the Shell Rock – Winnebago River 1W1P partners are striving to attain, regardless of the time frame. The desired future condition (DFC) sets the direction for planning and future management. It should be described for priority water resources and reflect stakeholder interests.

MEASURABLE GOAL

The Shell Rock – Winnebago River 1W1P 10-year plan goal; the quantifiable change in resource condition expected after implementation of the 10-year plan. The measurable goal should relate to the DFC, and express what percent of progress toward the DFC is intended to be made during the plan period.

OUTCOME

The specific result of an implementation activity. Collectively, the outcomes from plan activities should achieve the stated measurable goals. Outcomes may also express changes in knowledge or behavior which lead to actions that contribute to measurable goals.

OUTPUT

Countable projects, activities, services, or products. These are often referred to as 'widgets' and are the countable items that are useful for tracking the steps towards achieving the goals. Outputs are not goals in and of themselves because they do not quantify a change in the resource condition.

INDICATOR

A metric, benchmark, or measuring stick used to determine progress towards goals. In some cases, when a metric is not clear or feasible, the indicated might be the number of inputs or outputs themselves.

TARGET

There are three facets to targeting implementation activities: 1) activity type, 2) timing, and 3) location.

Activity type: the BMPs, conservation practices, outreach and education, monitoring, technical assistance or other action that will be the most effective in addressing the prioritized issues.

Timing: The scheduling of implementation activities across the 10-year plan period, based on which priority issues will be addressed in which order.

Location: The area where a specific activity will be implemented that to address a priority issue. Sometimes, the location of the implementation activity will not be the same location of the priority resource that is being addressed. For instance, reducing sediment concentrations in the main stem of a river may require actions to be taken at the headwaters of minor watersheds.

PLANNING AREA

The planning area for the Shell Rock Winnebago 1W1P is identified in Figure 1.1.

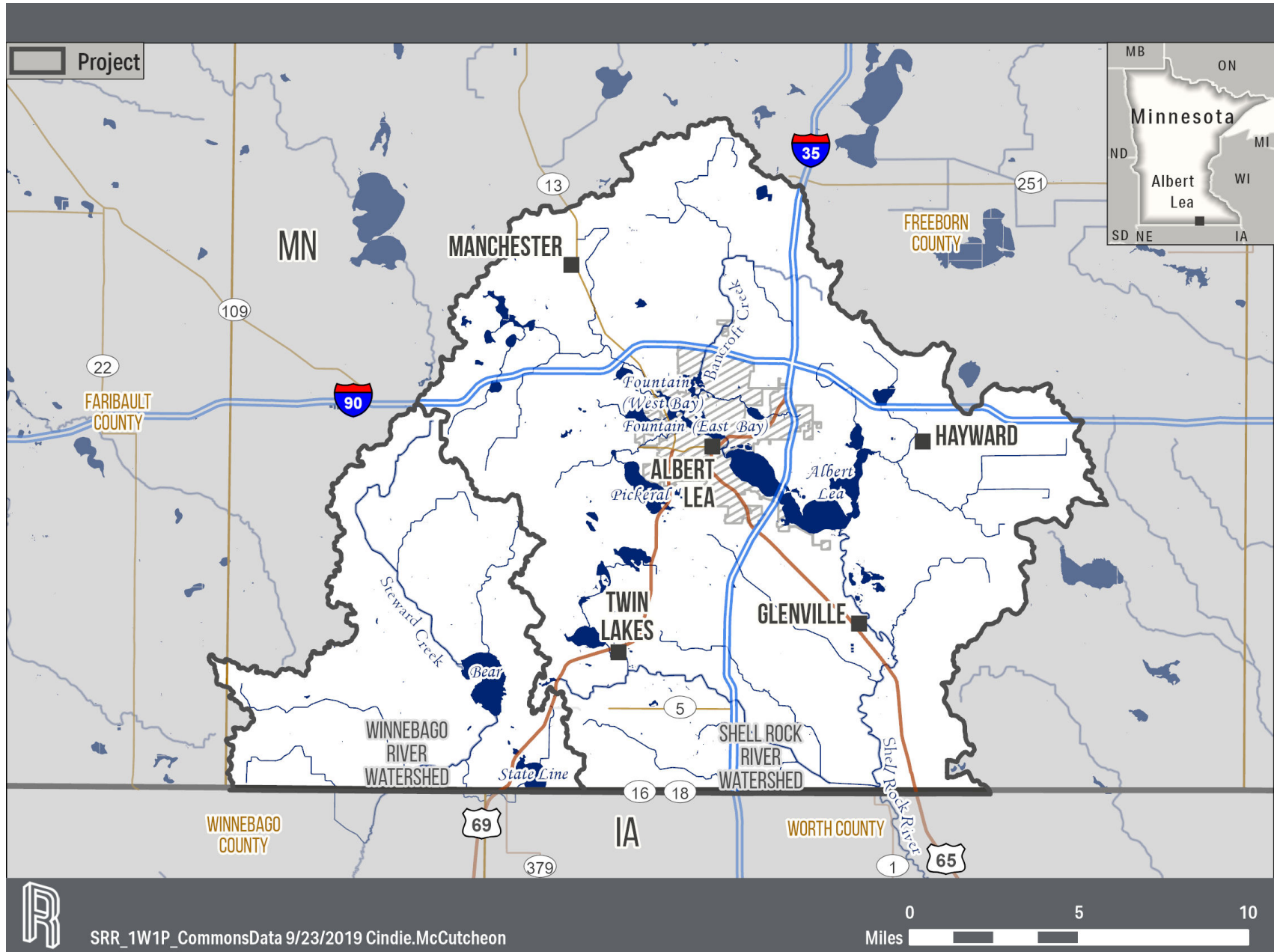


Figure 1.1. Shell Rock Winnebago River One Watershed One Plan Planning Area.