

WATERSHED WEEKLY

APRIL 17, 2026

WWW.SHELLROCK.ORG



BOARD MEETING

The Shell Rock River Watershed District Board of Managers hosted their monthly board meeting on April 14, 2026, at 8:30 AM. The meeting was recorded and uploaded to the District's website: www.shellrock.org. Check out previous agendas and minutes there too.

ALBERT LEA ANGLERS
ALBERT LEA LAKES FOUNDATION
SRRWD
Shell Rock River Watershed District
Working Together to Improve Water Quality

LAKES CLEANUP DAY
Saturday, April 25

located at Frank Hall Park

- dumpster
- garbage bags
- gloves

Medallion Hunt! NEW!
3 unique "ten year anniversary" medallions will be hidden around the lakes!
Turn in **with** collected lakeside garbage for a prize!

DRESS FOR A MESS!

CERTIFIED BY BLUE ZONES COMMUNITY TRUE ZONES PROJECT

LAKES CLEANUP AND MEDALLION HUNT

It's time to show some love to our lakes AND have a little fun while doing it! April 25th is Albert Lea Lakes Cleanup Day! Help keep Albert Lea Lake and our lakes clean, beautiful, and thriving for everyone to enjoy.

NEW THIS YEAR: Albert Lea Blue Zones Project Medallion Hunt!
As part of the cleanup, the Albert Lea Blue Zones Project is hiding 3 medallions around the lakes!

Find a medallion while you're out cleaning and you could score a fun prize!

- This is the perfect way to:
- Get outside
 - Give back to the community
 - Spend time with friends & family
 - And maybe win something along the way
- Bring your crew, lace up your walking shoes, and let's make a difference together!

Spring Cleanup

Free or reduced fees on many items!

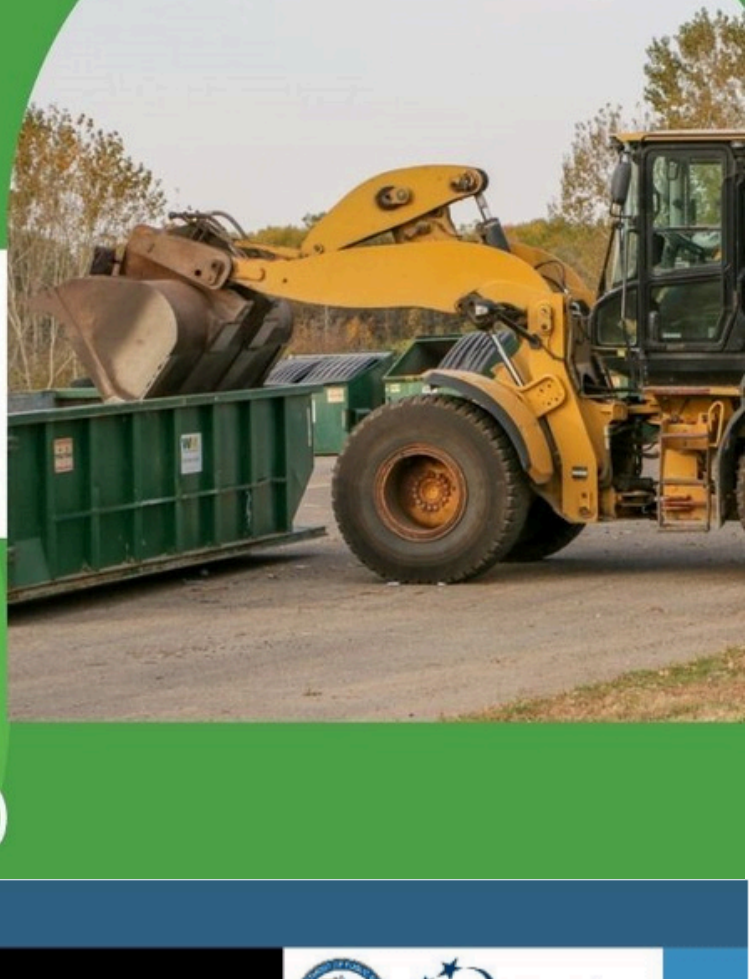
Saturday, April 25

9 a.m. – noon

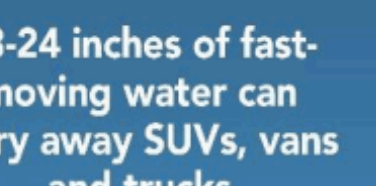
With proof of Albert Lea residency

Transfer Station
2506 W. Richway Dr.
Albert Lea

507-373-5013 or
507-377-4325 (Engineering)



TURN AROUND, DON'T DROWN



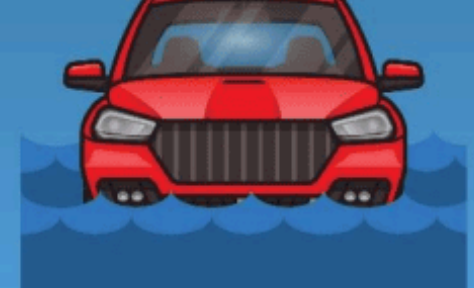
6 inches of fast-moving water can knock over and carry away an adult



12 inches of fast-moving water can carry away a car



18-24 inches of fast-moving water can carry away SUVs, vans and trucks



MINNESOTA FLOOD SAFETY

Severe Weather Awareness weeks wraps up today. Minnesota Severe Weather Awareness Week is a public education campaign promoted by the National Weather Service, the Minnesota Department of Public Safety, and local Emergency Management Agencies. The week is designed to refresh, remind, and educate residents about seasonal threats such as tornadoes, severe thunderstorms, flooding, lightning, hail, and extreme heat, and to encourage preparation of emergency plans and kits.

Each year, more deaths occur due to flooding than from any other thunderstorm related hazard. The Centers for Disease Control and Prevention report that over half of all flood-related drownings occur when a vehicle is driven into hazardous flood water. The next highest percentage of flood-related deaths is due to walking into or near flood waters. People underestimate the force and power of water. Many of the deaths occur in cars swept downstream. Many of these drownings are preventable. Never drive around the barriers blocking a flooded road. The road may have collapsed under that water. A mere 6 inches of fast-moving flood water can knock over an adult. It takes just 12 inches of rushing water to carry away most cars and just 2 feet of rushing water can carry away SUVs and trucks. It is NEVER safe to drive or walk into flood waters.



SURVEY FOR AMA

Shell Rock River Watershed District staff and Barr Engineering surveyed the Shell Rock River south of the Albert Lea Lake dam for future restoration efforts.



EARTH DAY

The Shell Rock River Watershed District staff will be out and about on Earth Day picking up litter, cleaning storm drains and raising awareness. "Unless someone like you cares a whole awful lot, nothing is going to get better. It's not." The Lorax



ADOPT A DRAIN

SRRWD staff, Leah Stadheim, reminds residents to clean off your storm drain before April showers! The Adopt-a-Drain program is a fun and important way for people to help keep their community clean and protect local lakes and rivers. When it rains, water flows into storm drains on streets and in neighborhoods. Unlike water from sinks and toilets, stormwater does not go to a treatment plant—it flows directly into nearby streams, rivers, and lakes. If trash, leaves, or pet waste are left near drains, they can wash into the water and cause pollution.

The City of Albert Lea is offering an incentive for everyone who signs up and commits to keeping their drain clean. After signing up, please visit the Shell Rock River Watershed District office to pick up your 2026 compost permit!

Sign up at www.shellrock.org.